



www.swanlandschool.co.uk

23<sup>rd</sup> February 2023

## PARENTS' NEWSLETTER

Dear Parent/Carer



### Strike Action – Tuesday 28<sup>th</sup> February, Wednesday 15<sup>th</sup>, Thursday 16<sup>th</sup> March 2023

At this time, we are not aware of any need to close to any groups of children owing to strike action, however if we do need to do so, we will let you know at the earliest opportunity.



### REMINDER: PTA Bag2School Collection – Tuesday 28<sup>th</sup> February 2023

Please remember that the next Bag2School collection is on Tuesday 28<sup>th</sup> February 2023. Please [click here](#) for further information regarding the collection. Thank you.



### REMINDER: Parent Teacher Consultation Evenings (28<sup>th</sup> February and 2<sup>nd</sup> March)

Just a reminder, if you have not done so already and wish to discuss your child's progress, please click on your child's class below to book your slot at the Parent Teacher Consultation Evening. Thank you.

Please note all Parent Teacher Consultation Evenings for 1RP have been postponed. Parents of 1RP are welcome to come in and see their children's work that will be left out in the classroom if they wish during Tuesday's and Thursday's parents' evenings. Alternative arrangements will be made for 1RP's parents' evening appointments. Sorry for any inconvenience.

- Tuesday 28th February (not 1RP)
- Thursday 2nd March (not 1RP)

[RHM](#)

[RCM](#)

[1EJ](#)

[2JP](#)

[2EE/SP](#)

[3GW](#)

[3SM](#)

[4KC](#)

[4MR](#)

[5RC](#)

[5DR](#)

[6AN/JS](#)

[6KG](#)



### PTA Nearly New Uniform

Please note, the PTA will have the 'Nearly New Uniform' out on sale on the Parent Teacher Consultation Evenings so if you require any uniform items, please do take a look; cash donations will be gratefully received on the night.



### Lost Property

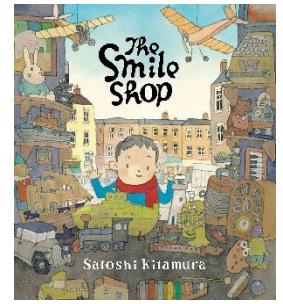
Lost Property will be displayed on the Parent Teacher Consultation Evenings. If children have lost items at school, please do look. Thank you.

PTO



### World Book Day – Thursday 2<sup>nd</sup> March 2023

World Book Day will be celebrated this year on Thursday 2<sup>nd</sup> March. World Book Day celebrates the joy of reading, so we hope you will take some extra time during the week to enjoy a book or two with your child(ren). In school we will be reading ‘The Smile Shop’ on the day and all the children will be given a voucher to spend at a book shop. Please note, vouchers will be given out tomorrow, Friday 24<sup>th</sup> February. For more information on how to redeem your £1 voucher and the books/events available, please visit [World Book Day](#).



During the week commencing Monday 27<sup>th</sup> February 2023, there will be a special themed menu for World Book Week!

[Click here to see the updated menu.](#)



### Red Nose Day – Friday 17<sup>th</sup> March 2022 – Non-Uniform Day!

This year we are once again raising money for [Red Nose Day](#) 2023! Additionally, a small donation of any value towards our Red Nose Non-Uniform Day will be most gratefully received. This year the suggested theme is to wear something that makes you or your school smile. This could be your favourite outfit, a funny costume or something else that just makes you happy!

To support Red Nose Day/Non-Uniform Day, this year we are asking that children do not bring cash donations into school but that you make your donation via this link. Thank you. To learn more about how Red Nose Day spend the money raised, please visit [Red Nose Day](#).

### ParentPay Current Online Payments

- Year 5 Residential to Robinwood (Balance) – due 15<sup>th</sup> March 2023
- Year 3 Pre-History Full-Day Workshop – due 16<sup>th</sup> March 2023
- Year 2 Willy Wonka Adventure – due 17<sup>th</sup> March 2023
- Year 1 Performance ‘Rise & Shine’ Tickets – due 22<sup>nd</sup> March 2023
- Year 6 Residential to Cober Hill (Balance) – due 23<sup>rd</sup> March 2023

### PTA ‘Your School Lottery’

Thank you to everyone who is supporting the School Lottery and congratulations to the weekly winners! If you have not yet signed up, why not visit our lottery here! [Your School Lottery](#)

### Flyers on the School Website

Community flyers added to the School website this week are listed below.

All flyers can be found by [clicking on this link](#)

*Disclaimer: Swanland Primary School does not endorse the following flyers; we are simply sharing the information.*

- Supporting Dyslexic Learners, 9th March 2023 (under Education, Dyslexia Sparks)

PTO



# Dates for your



## Spring Term 2023 Diary (→ [New Diary Item](#))

Tuesday 28<sup>th</sup> February – PTA Bag2School Collection

Tuesday 28<sup>th</sup> February – Parent Teacher Consultation Evening (not 1RP)

~~Wednesday 1<sup>st</sup> March – Parent Teacher Consultation Evening (1RP only)~~

Thursday 2<sup>nd</sup> March – World Book Day

Thursday 2<sup>nd</sup> March – Parent Teacher Consultation Evening (not 1RP)

Monday 6<sup>th</sup> March – PTA Meeting – All Welcome! (7.00 pm)

Monday 13<sup>th</sup> March – Class Photographs (not Year 6)

Friday 17<sup>th</sup> March – Red Nose Day – Non-Uniform Day

Tuesday 21<sup>st</sup> March – Odd Sock Day for Down Syndrome Day (details to follow)

Wednesday 22<sup>nd</sup> March – Year 3 History Visitor (see separate letter)

Thursday 23<sup>rd</sup>–Friday 24<sup>th</sup> March – Year 4 Cranedale Residential Visit

Friday 24<sup>th</sup> March – Year 2 Willy Wonka Adventure

→ Tuesday 28<sup>th</sup> March – Year 1 Performance ‘Rise & Shine’, 10.00 am

→ Wednesday 29<sup>th</sup> March – Year 1 Performance ‘Rise & Shine’, 10.00 am

Thursday 30<sup>th</sup> March – School Closes for Easter Holidays (3.20 pm)

Monday 17<sup>th</sup> April – School Re-opens after Easter Holidays (8.45–8.50 am)

→ Monday 24<sup>th</sup> April – PTA Meeting – All Welcome! (7.00 pm)

→ Monday 1<sup>st</sup> May – School Closed for May Bank Holiday

→ Monday 8<sup>th</sup> May – School Closed for King’s Coronation

→ Tuesday 9<sup>th</sup> – Friday 12<sup>th</sup> May – Year 6 SATS week

→ Wednesday 10<sup>th</sup> – Friday 12<sup>th</sup> May – Year 5 Robinwood Residential Visit

→ Wednesday 24<sup>th</sup> May – Year 2 Far Ings visit (information to follow)

→ Thursday 25<sup>th</sup> May – School Closes for May Half-Term Holidays (3.20 pm)

→ Monday 5<sup>th</sup> June – School Re-opens after May Half-Term Holidays (8.45–8.50 am)

Thank you for your continued support.

Yours sincerely

Hannah Stephenson

Head Teacher