



www.swanlandschool.co.uk

9th March 2023

PARENTS' NEWSLETTER

Dear Parent/Carer



Red Nose Day Quiz – ‘Photos to make you smile!’

Can you guess who's who from our school staff?

For a special assembly on Red Nose Day (Friday 17th March), we have collected cute and funny photos of some of our school staff when they were much younger! A4 picture sheets will be available to buy for 50p from your class teacher on Monday to Thursday next week with all money going to Comic Relief. If completed sheets are handed back to your child's class teacher **by the end of school on Thursday 16th March** (to be passed on to Mrs Lamb), your child's name will be entered into a prize draw with lots of cute and funny prizes! (Do not worry if the answers are wrong – you can still win!) The answers and prizes will be given out to the children in the Friday assembly. We hope you have fun guessing and ... keep smiling!



REMINDER: Red Nose Day – Friday 17th March 2023 – Non-Uniform Day!

To support Red Nose Day, for this year's Non-Uniform Day we are asking that children wear something that makes them or their school smile! This could be their favourite outfit, a funny costume or something else that just makes them happy! We ask that you do not bring cash donations into school but that you make your donation via this link. Thank you. To learn more about how Red Nose Day spend the money raised, please visit [Red Nose Day](#).



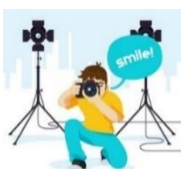
What Parents and Carers Need to Know about iPads

The iPad, a familiar companion for children and young people: an auxiliary TV; an aid for schoolwork; and a blessing on long car journeys. That said, there are still some aspects of a tablet that parents and carers should bear in mind to help protect their child from online risks, possible hazards including the risk of age-inappropriate content, physical damage to the device and potential screen addiction. Please see the separate flyer.



Garden Planters

If anyone has any garden planters that we can use to plant lavender, we would love these for our garden area at school, please. Thank you!



REMINDER: Class Group Photos – Monday 13th March 2023 (not Year 6)

Please note that each class (not Year 6) will have a group photo taken on Monday 13th March 2023, which will be available for parents to purchase afterwards.

PTO



PTA's Big Easter Egg Giveaway 2023! – Closing Date Friday 24th March 2023

Please see the separate letter (paper copy of this letter also being sent home with your child tomorrow) about this year's PTA Big Easter Egg Giveaway 2023 – please ensure all forms, together with money raised, are returned to school **by Friday 24th March 2023**. Prizes will be given during the whole school assembly on **Wednesday 29th March 2023**. Thank you in advance for supporting this event!



Data Collection Sheet for Checking Please

We have now received most of the checked, amended (if necessary), signed and dated Data Collection Sheets from parents/carers – thank you. (If you have still not returned your sheet, please do so **by Thursday 30th March 2023**).

May we remind you that it is your responsibility to advise us of any future changes to personal details, so please do not wait for us to ask!



School Website

The school website provides current up-to-date information for parents – [click here](#). For example, click on the [PARENTS](#) tab to see many pages of interest, including [school newsletters](#) and [lunches](#); the [NEWS AND EVENTS](#) tab where you will find term dates (**please see recently updated term dates for 2022-23**); and the [Calendar](#), which is handy to see what is happening in school. Finally, the [CLASS PAGES](#) tab is useful to see what is planned for your child's class.



Whole School Approach programme

We have been asked by the East Riding of Yorkshire Council to share the following information and the link to a survey:

At Hull and East Yorkshire Mind, we are currently working with a number of local schools as part of our Whole School Approach programme – a programme which aims to bring the whole school community together for improved mental health and wellbeing.

As part of this work, we are currently working with East Riding of Yorkshire Council to identify gaps of provision within our community and to identify areas for improvement across the East Riding of Yorkshire, specifically in relation to mental health and emotional wellbeing within schools.

We now need schools help to circulate our survey. This will help us to identify what is currently happening and anything that we can potentially support with. By gaining a more inclusive understanding, we can work with schools to offer further support and education to students, parents and carers and school staff.

The more responses we get the better we are able to understand the needs within your school community. The survey is designed for school staff, pupils and parents/carers to complete. A drop-down selection of schools is also available.

- Answers are all anonymous.
- Answers are treated in confidence and they will not affect the support you receive.
- Any personal information that is included on the questionnaire will be stored securely.
- Results of this survey will be shared with East Riding of Yorkshire Council's Public Health Team and partners.

[Please click here to complete the survey](#). Thank you.

PTO



ParentPay Current Online Payments

- Year 5 Visit to Hull Sikh Centre – due TOMORROW, 10th March 2023
- Year 5 Residential to Robinwood (Balance) – due 15th March 2023
- Year 3 Pre-History Full-Day Workshop – due 16th March 2023
- Year 2 Willy Wonka Adventure – due 17th March 2023
- Year 1 Performance ‘Rise & Shine’ Tickets – due 22nd March 2023
- Year 6 Residential to Cober Hill (Balance) – due 23rd March 2023

PTA ‘Your School Lottery’

Thank you to everyone who is supporting the School Lottery and congratulations to the weekly winners! If you have not yet signed up, why not visit our lottery here! [Your School Lottery](#)

Flyers on the School Website

Community flyers added to our website this week are listed below and can be found by [clicking on this link](#). *Disclaimer: Swanland Primary School does not endorse the following flyers; we are simply sharing the information.*

- Fit4Fun School’s Out for Easter (under Children’s Clubs, Easter Holidays)

Spring Term 2023 Diary (→ [New Diary Item](#))

Monday 13th March – Class Photographs (not Year 6)

Friday 17th March – Year 5 Visit to Hull Sikh Centre

Friday 17th March – Red Nose Day – Non-Uniform Day

Tuesday 21st March – Odd Socks Day for Down Syndrome Awareness

Wednesday 22nd March – Year 3 History Visitor

Thursday 23rd–Friday 24th March – Year 4 Cranedale Residential Visit

Friday 24th March – Year 2 Willy Wonka Adventure

Tuesday 28th March – Year 1 Performance ‘Rise & Shine’, 10.00 am

Wednesday 29th March – Year 1 Performance ‘Rise & Shine’, 10.00 am

Thursday 30th March – School Closes for Easter Holidays (3.20 pm)

Monday 17th April – School Re-opens after Easter Holidays (8.45–8.50 am)

Monday 24th April – PTA Meeting – All Welcome! (7.00 pm)

Monday 1st May – School Closed for May Bank Holiday

Monday 8th May – School Closed for King’s Coronation

Tuesday 9th–Friday 12th May – Year 6 SATS week

Wednesday 10th–Friday 12th May – Year 5 Robinwood Residential Visit

Wednesday 24th May – Year 2 Far Ings Visit (information to follow)

Thursday 25th May – School Closes for May Half-Term Holidays (3.20 pm)

Monday 5th June – School Re-opens after May Half-Term Holidays (8.45–8.50 am)

Thank you for your continued support.

Yours sincerely

HStephenson

Hannah Stephenson – Head Teacher