



www.swanlandschool.co.uk

20th March 2025

PARENTS' NEWSLETTER

Dear Parent/Carer

UPCOMING DIARY DATES

Friday 21st March – Red Nose Day [CLICK HERE](#) – please make any donations [via this link](#).

Friday 21st March – 'Lots of Socks' Day [CLICK HERE](#)

Monday 24th March – Year 3 Pre-History Day [CLICK HERE](#)

Tuesday 25th March – PTA Mother's Day Shop [CLICK HERE](#)

Wednesday 26th March – Year 2 Visit to Humberdale Farm [CLICK HERE](#)

Wednesday 26th March – Year 5 Visit to the Hull Guru Nanak Gurdwara Sikh Centre [CLICK HERE](#)

Thursday 27th March – South Hunsley Spring Music Festival (certain children only)

Thursday 27th March – Year 5 Visit to Jorvik Viking Centre, York [CLICK HERE](#)

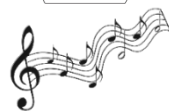
Thursday 27th March–Friday 28th March – Year 4 Residential Visit to Cranedale [CLICK HERE](#)



REMINDER: TOMORROW Friday 21st March 2025

Red Nose Day – Non-Uniform Day, wear something that makes you smile! [CLICK HERE](#) – please make any donations [via this link](#). Remember to send your child with 50p if they want to enter the 'Spot the Spots' competition!

and it is '**Lots of Socks**' Day – come to school with extra socks on – the more colourful, the better! Cash donations gratefully accepted [CLICK HERE](#)



Music Recruitment for 2025-26 (Years 3-6) (current Years 2-5)

Note to new starters only, amongst those pupils who will be in Years 3-6, for the school year 2025-2026.

The East Riding Schools' Music Service provides lessons within school in **Upper Strings, Keyboard, Percussion, Woodwind, Brass, Lower Strings and Guitar** and are looking to recruit new pupils for the year 2025-26, starting September 2025.

If you wish to express an interest in your child taking up lessons or require more information, please email schools.music@eastriding.gov.uk



Indoor Athletics Achievement!

Congratulations to the Year 5 and 6 children that represented the school in the Indoor Athletics competition last week. Having won the South Hunsley Partnership event, the team went through to the grand finals at South Hunsley. Following very competitive events we are pleased to announce that Swanland won!



PTO

ParentPay – Current Online Payments [CLICK HERE](#)

- Year 1 Performance ‘Rise and Shine’ Tickets – due before Wednesday 26th March 2025
- Year 2 Willy Wonka Day – **due before** Thursday 27th March 2025
- Year 6 Residential to Cober Hill (balance) – **due before** Friday 11th April 2025

Please note, deadlines for events will no longer be extended. Thank you.

FLYERS & LEAFLETS

Flyers on the School Website

Community flyers added to the school website this week can be found by [clicking on this link](#) then looking under [Spring Term 2024–25, Second Half Spring Term Flyers](#).

- [Direct Link to Stage-ed Easter Holiday School – Click Here](#)

Disclaimer: Swanland Primary School does not endorse the following flyers; we are simply sharing the information.

Dates for your



FORTHCOMING DIARY DATES

[Spring Term 2025 Diary](#) (→ [New Diary Item](#))

Monday 31st March – Year 1 Dress Rehearsal of ‘Rise & Shine’ to the school

Monday 31st March – Visit to St Barnabas Church (Years 1–6) [CLICK HERE](#)

Tuesday 1st April – Year 1 Performance of ‘Rise & Shine’ (10.00 am)

Wednesday 2nd April – Year 1 Performance of ‘Rise & Shine’ (10.00 am)

[CLICK HERE](#)

Wednesday 2nd April – PTA’s Big Easter Egg Giveaway 2025! [CLICK HERE](#)

Thursday 3rd April – Year 2 Willy Wonka Day [CLICK HERE](#)

Thursday 3rd April – School Closes for Easter Holidays (3.20 pm)

[Summer Term 2025 Diary](#) (→ [New Diary Item](#))

Tuesday 22nd April – School Re-opens after Easter Holidays (8.45–8.50 am)

Friday 25th April – Author Peter Bently Visit to school (*details to follow*)

Friday 25th April – PTA Bag2School Collection (*letter to follow*)

Monday 5th May – School closed for May Bank Holiday

Monday 12th–Friday 16th May – Year 6 SATS week

Wednesday 14th–Friday 16th May – Year 5 Robinwood Residential Visit [CLICK HERE](#)

Tuesday 20th May (PM) – Years 1 & 2 Sports Day (*details to follow*)

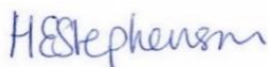
Wednesday 21st May – Year 2 Visit to Far Ings Education Centre (*letter to follow*)

Friday 23rd May – School Closes for May Half-Term Holidays (3.20 pm)

Tuesday 3rd June – School Re-opens after May Half-Term Holidays (8.45–8.50 am)

Thank you for your continued support.

Yours sincerely



Hannah Stephenson

Head Teacher